



# Geauga County Courthouse Addition

Chardon Square, Ohio

11-7-23



# Agenda

Court Goals for the Addition

Early Concepts

Present Design

## Court Goals for the Addition

- Increased Security for the Court
  - Sallyport for Prisoner Drop off and Ambulance pickup
  - Secure Parking Area for:
    - Judges
    - Magistrates
    - Clerk of Courts
  - Secure Elevator for Judge and Prisoner transport
  - Screening of all visitors to the Court
    - One entrance for all personnel (except Judges)

## Project Objectives

### Court Goals for the Addition, cont.

- ADA access
- Relocation of heavily use facilities to Ground Floor
  - Clerk of Courts
    - Public Terminals
    - Microfilm Station
    - Protective Order Area
  - Probation Offices
    - Link Probation Offices to Sally Port
      - If probationer fails drug test needs to go to prisoner transport

## Project Objectives

### Court Goals for the Addition, cont.

- More functional layout of court spaces
  - Location of each Judge's staff on one floor
    - Judge Paschke – Second Floor
      - Drug Court
        - One floor up from Probation
      - Magistrate Court
      - IT representative
      - Jury Room
    - Judge Ondrey – Third Floor
      - Two Magistrate Courts
      - IT representative
      - Jury Room
- Sufficient number of conference rooms for:
  - Client / Attorney Meetings
  - Jury Assembly
  - Press

## Court Goals for the Addition, cont.

- More functional layout of court spaces
  - Added break/lunchrooms for each floor
    - Also serve as departmental conference rooms
  - Sufficient number of conference rooms for:
    - Client / Attorney Meetings
    - Jury Assembly
    - Press



# Early Concepts



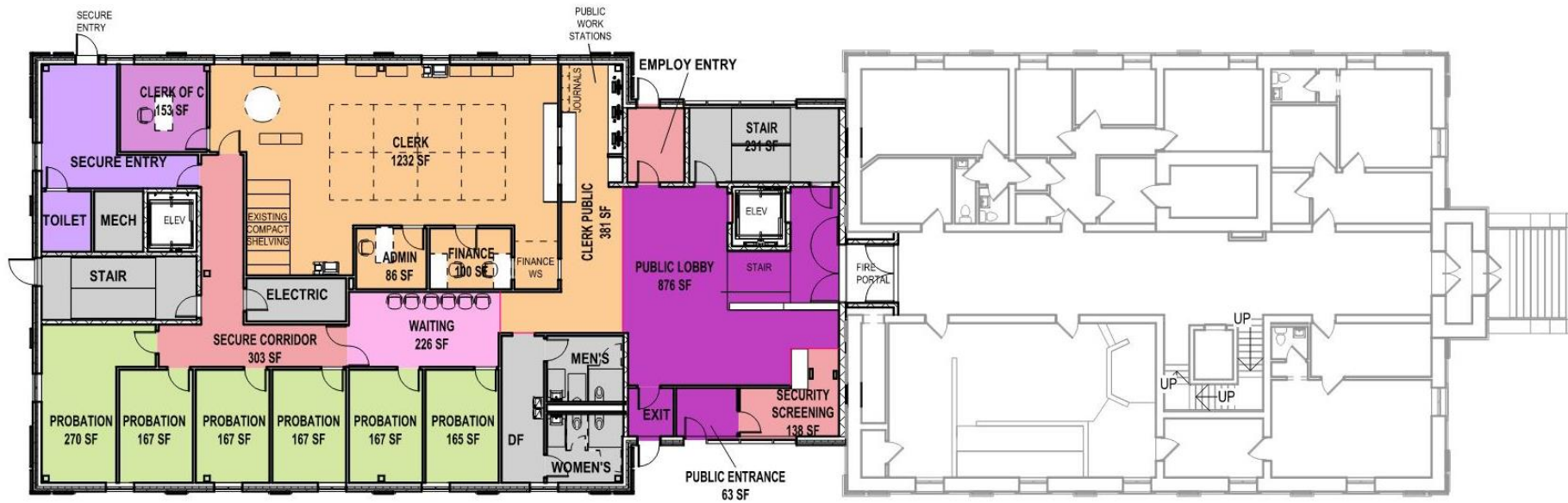
Smaller  
Footprint

Limited  
Windows

No Sallyport



# Early Concepts



ADDITION FIRST FLOOR PLAN - CLERK / PROBATION

FIRST FLOOR PLAN - EXISTING - UP A HALF-LEVEL

Smaller Footprint

Limited Windows

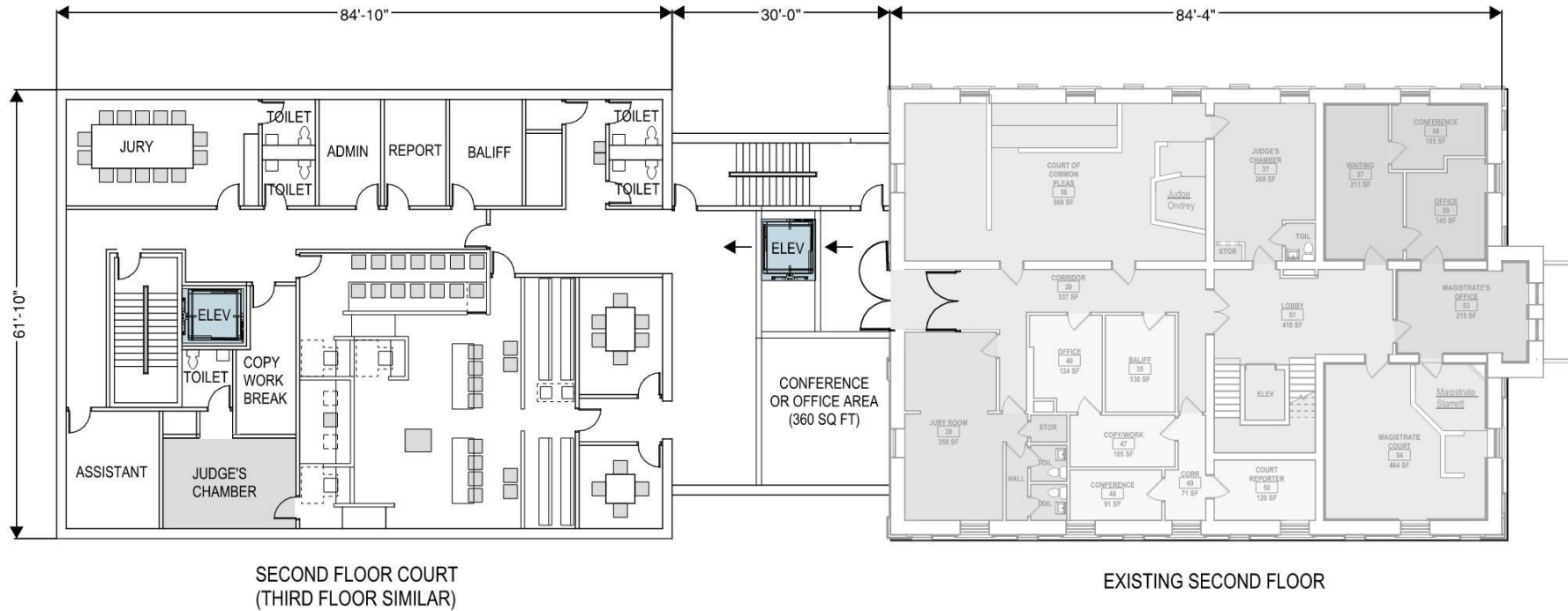
Not enough space per floor for all required functions

No Sally Port

Employee entrance not secure



# Early Concepts



Smaller  
Footprint

Limited Windows

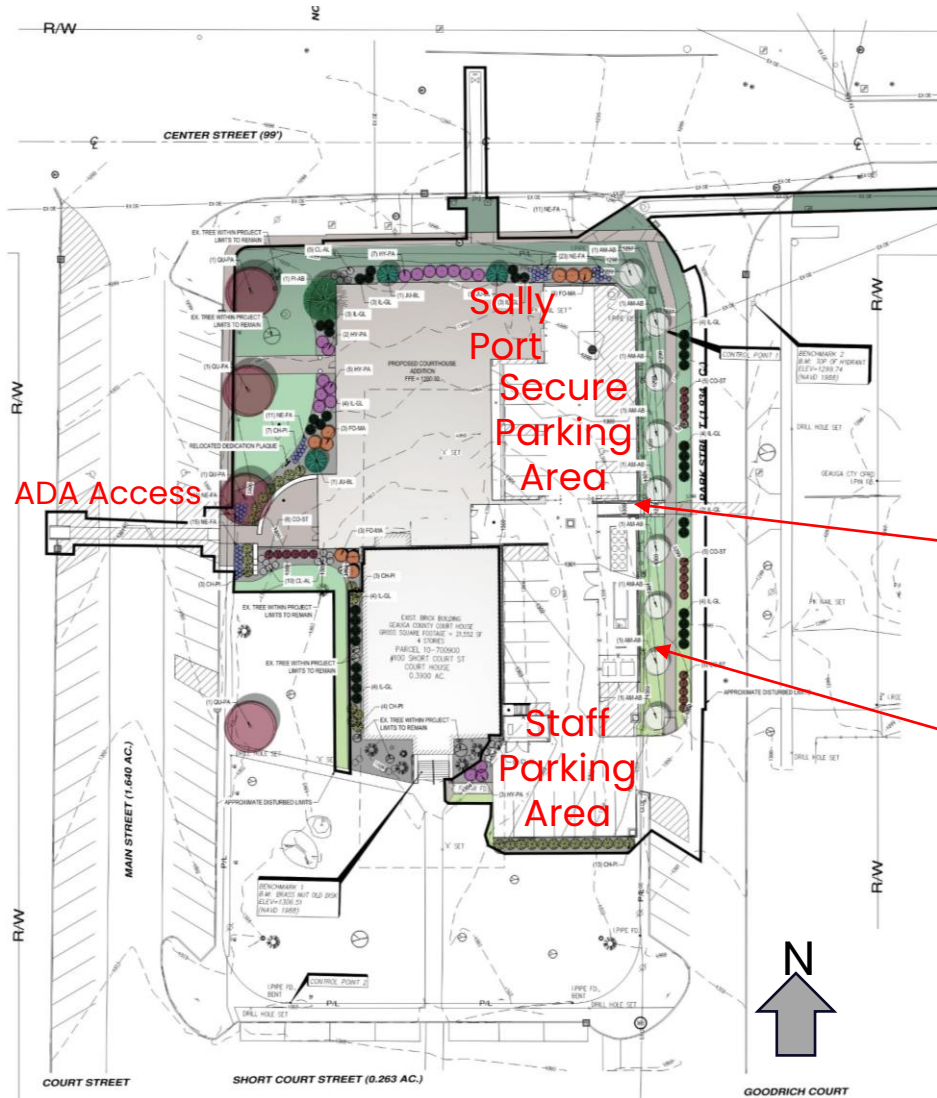
Not enough  
space per floor  
for all required  
functions

No Holding Cell

No Bench ADA  
Access

No enough  
conference  
rooms

# Present Design – Site and Landscape



E. Park St. Current Conditions

ADA Access

ADA Access from parking across E. Park St.

Screen wall to hide chiller, generator, dumpsters

ADA Access currently not possible from west side of Main St.





# Present Design



The Palazzo Senatorio – Rome, Italy

*Michelangelo (1582-1605), Giacomo della Porta (1532-1602) and Girolamo Rainaldi (1570-1655)*

Addition is Sympathetic to **Italianate Architecture** of Historic District while following Park Service Guidelines

Tripartite division of façade

- Base
- Middle with taller Elements
- Top with shorter elements



*Main Street Chardon – base, middle, top*



**Present Design** National Park Service Preservation Brief #14 advises Exterior additions “must be differentiated, but compatible with the historic building”.



Larger  
Footprint

More  
Windows

Enough  
space per  
floor for all  
functions

Security  
Lobby  
accessible  
from E & W  
sides



# Alternate Design – brick panels in lieu of stone panels





# Base Fencing Design – Stone Piers with Metal Infill Fencing



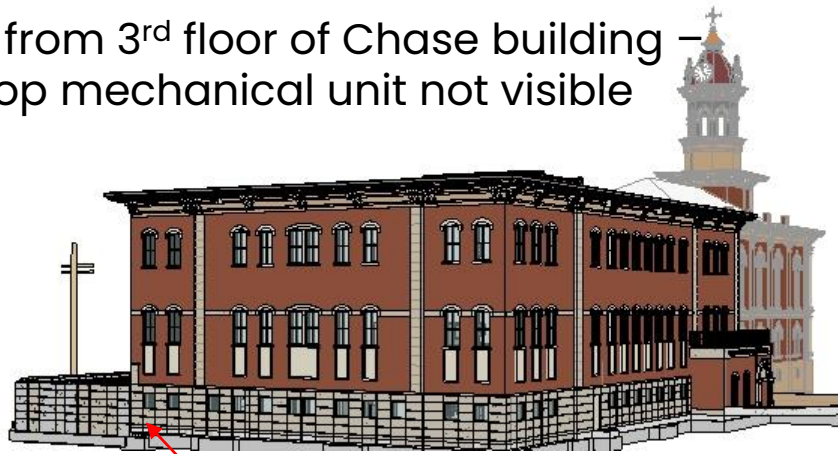


# Alternate Design – Matching Stone Veneer on Secure Enclosure

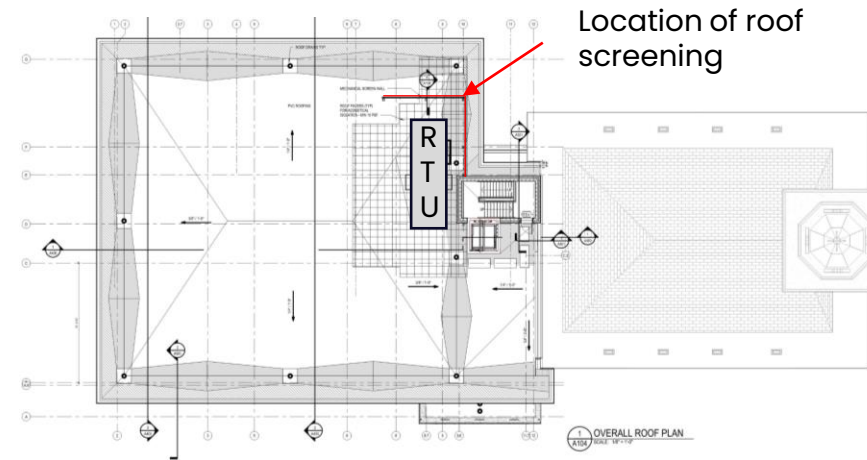


# Views from adjacent buildings and material for base

View from 3<sup>rd</sup> floor of Chase building – rooftop mechanical unit not visible



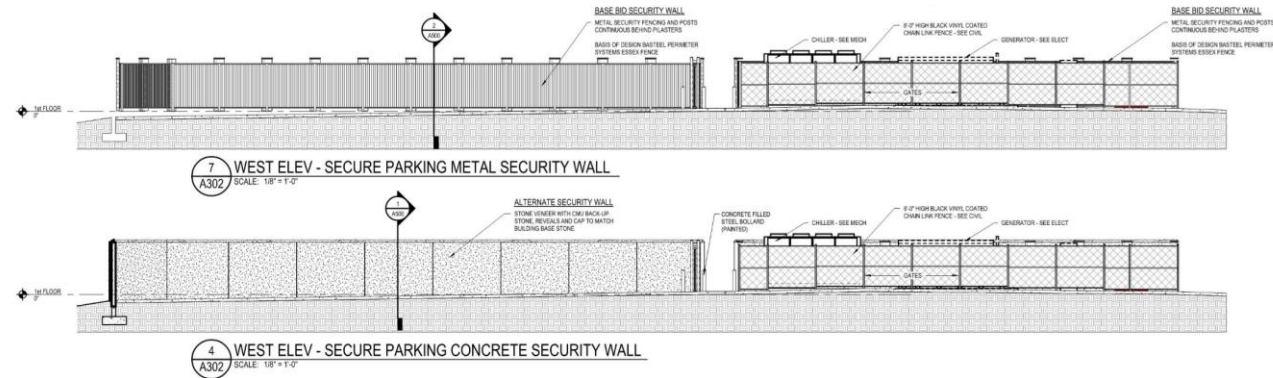
Stone from same quarry as original building used for base of new building and secure fencing



View from 2<sup>nd</sup> floor of Annex building across the street from addition – rooftop mechanical unit not visible



# Views from adjacent buildings and material for base



Stone from same quarry as original building used for base of new building and secure fencing



# First Floor – Proposed Plan



Larger Footprint

One security station for two entrances

Windows for offices

Required Breakroom/Conf Spaces

Sally Port / Holding Cell / Secure Elevator

Probation Drug Testing Areas

Public Counter for Clerks

Protective Services



# Second Floor – Proposed Plan

Larger Footprint

Windows for most offices

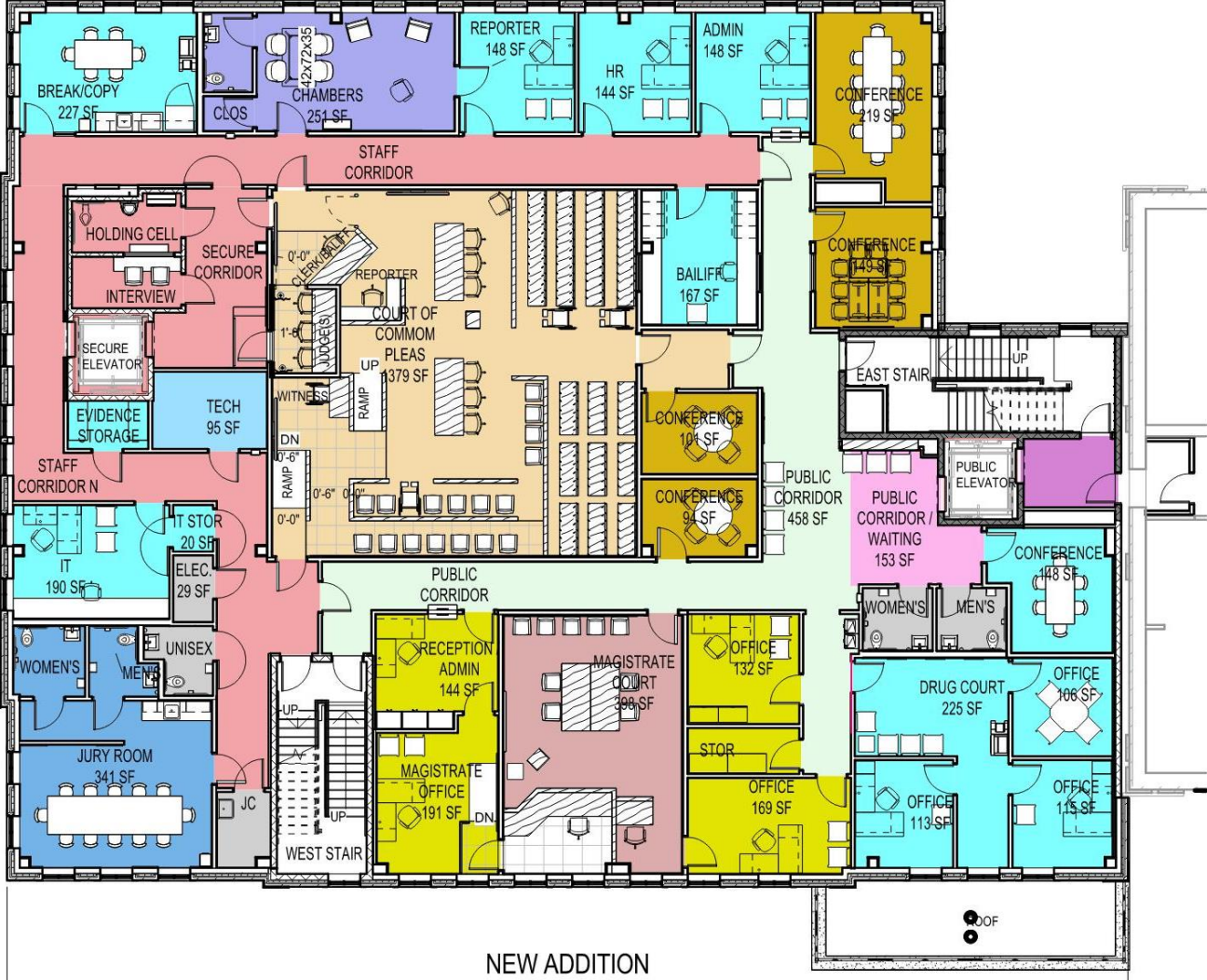
Required meeting / conf rooms

Holding Cell

ADA Bench Access

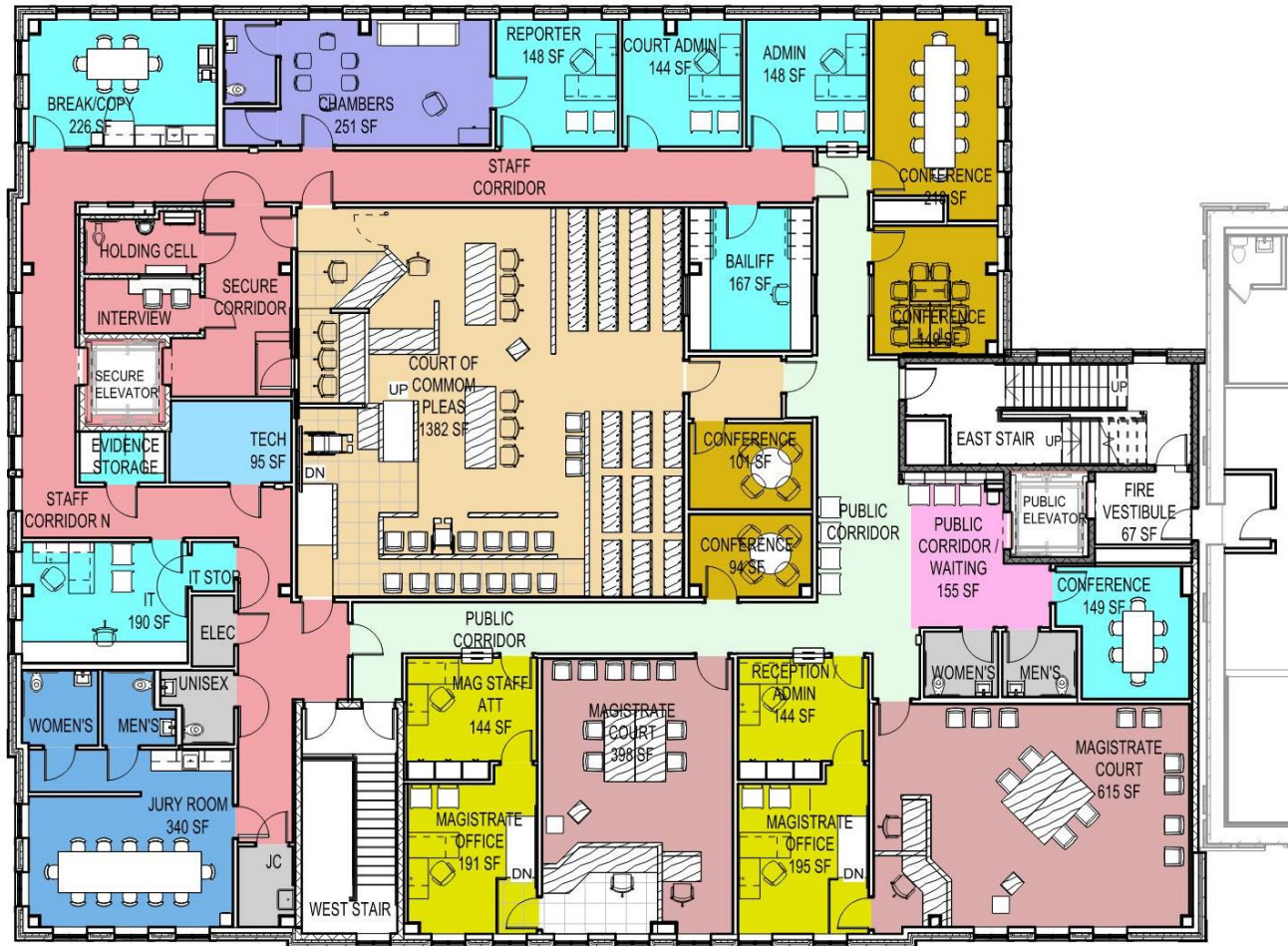
Larger Courtroom

Room for Drug Court



NEW ADDITION

# Third Floor – Proposed Plan



Larger Footprint

Windows for most offices

Required meeting / conf rooms

Holding Cell

ADA Bench Access

Larger Courtroom

Room for two Magistrates Courtrooms



# Questions?

